



BICYCLE TYRES & TUBES

J
2
0
2
2

Rubena
TYRES

RIDING WITHOUT LIMITS



The tradition of Rubena's rubber industry dates back to the year 1908. The first Czechoslovak bicycle tyre was manufactured in Náchod in 1929. Thanks to the huge range of products, fans of all performance categories

and disciplines can find what they're looking for. The Rubena brand has a solution for every cyclist. All tyres and tubes are manufactured to the highest quality standards exclusively at the factory in the Czech Republic.

Historically, our products have appeared on wheels under the Kudrnáč, Barum, Rubena and Mitas brands. The Rubena product range includes bicycle tyres for MTB, Road, Gravel, City and Trekking, including tyres for E-bikes.

Rubena
TYRES



RIDING WITHOUT LIMITS

TYRES BY SIZE 03 – 04

PACKAGING 05 – 06

MTB 07 – 24

ROAD & GRAVEL 25 – 32

CITY & TREKKING 33 – 42

CARGO 43 – 44

ICE & SNOW 45 – 46

CONSTRUCTION 47 – 49

COMPOUNDS 50

TUBES / GAADI TUBES 51 – 52

SAFETY & INFLATING 53

ACCESSORIES 54

NOTES 55 – 57

CONTENTS

TYRES BY SIZE

Nominal Diameter (mm)	ETRTO	Alternative size	Pattern Name	Category	Page
635	40-635	28 x 1 1/2	HOOK	CITY TREKKING	39
			MISTRAL	CITY TREKKING	42
630	32-630	27 x 1 1/4	HOOK	CITY TREKKING	39
			KRATOS	MTB	14
622	66-622	29 x 2,60	MONARCH	MTB	17-18
			SCYLLA	MTB	13
			HIGHLANDER	MTB	16
			KRATOS	MTB	14
	62-622	29 x 2,45	MONARCH	MTB	17-18
			SCYLLA	MTB	13
			CHEETAH	MTB	19
			OCELOT	MTB	20
	60-622	29 x 2,35	KRATOS	MTB	14
			SCYLLA	MTB	13
			ZEFYROS	MTB	11
			RASCAL NEW	MTB	12
	57-622	29 x 2,25	HYPERION	MTB	15
			OCELOT	MTB	20
			CHEETAH	MTB	19
			TOMCAT	MTB	21
	54-622	29 x 2,10	CITYHOPPER	CITY TREKKING	36
			FLASH	CITY TREKKING	37-38
			WALRUS	CITY TREKKING	42
			ELECTRON	CITY TREKKING	35
	52-622	28 x 2,00	GRIPPER ICE	ICE SNOW	44
			HOOK	CITY TREKKING	39
			FLASH	CITY TREKKING	37-38
			SEPIA	CITY TREKKING	41
	47-622	28 x 1,75 x 2 (700 x 45C)	GRIPPER	CITY TREKKING	41
			X - ROAD	GRAVEL	29
			X - ROAD	GRAVEL	29
			CHEETAH	GRAVEL	32
42-622	700 x 40C	OCELOT	GRAVEL	32	
		SHIELD	CITY TREKKING	40	
		LANDMARK	CITY TREKKING	41	
		HOOK	CITY TREKKING	39	
40-622	700 x 38C	FLASH	CITY TREKKING	37-38	
		SEPIA	CITY TREKKING	41	
		GRIPPER	CITY TREKKING	41	
		X - ROAD	GRAVEL	29	

Nominal Diameter (mm)	ETRTO	Alternative size	Pattern Name	Category	Page
622	37-622	700 x 35C	HOOK	CITY TREKKING	39
			FLASH	CITY TREKKING	37-38
			FLIPPER	CITY TREKKING	42
			ELECTRON	CITY TREKKING	35
	35-622		GRIPPER	GRAVEL	32
			X - SWAMP	GRAVEL	31
	33-622	700 x 33C	X - FIELD	GRAVEL	30
			X - ROAD	GRAVEL	29
			HOOK	CITY TREKKING	39
	32-622	28 x 1 1/4 x 1 3/4 (700 x 32C)	FLASH	CITY TREKKING	37-38
			FLASH	CITY TREKKING	37-38
	28-622	700 x 28C	ARROW	ROAD	27
SYRINX			ROAD	28	
ARROW			ROAD	27	
25-622	700 x 25C	SYRINX	ROAD	28	
		SYRINX	ROAD	28	
23-622	700 x 23C	HOOK	CITY TREKKING	39	
		FLASH	CITY TREKKING	37-38	
590	37-590	26 x 1 3/8	KRATOS	MTB	14
			MONARCH	MTB	17-18
584	66-584	27,5 x 2,60	SCYLLA	MTB	13
			MONARCH	MTB	17-18
			HIGHLANDER	MTB	16
			KRATOS	MTB	14
	62-584	27,5 x 2,45	SCYLLA	MTB	13
			CHEETAH	MTB	19
			OCELOT	MTB	20
			KRATOS	MTB	14
	60-584	27,5 x 2,35	SCYLLA	MTB	13
			ZEFYROS	MTB	11
			HYPERION	MTB	15
	57-584	27,5 x 2,25	OCELOT	MTB	20
CHEETAH			MTB	19	
TOMCAT			MTB	21	
HOOK			CITY TREKKING	39	
54-584	27,5 x 2,10	CHEETAH	MTB	19	
		OCELOT	MTB	20	
		CHEETAH	MTB	19	
		TOMCAT	MTB	21	
40-584	26 x 1 1/2		HOOK	CITY TREKKING	39

MTB

ROAD

GRAVEL

CITY

TREKKING

CARGO

ICE & SNOW

Rubena
TYRES

Nominal Diameter (mm)	ETRTO	Alternative size	Pattern Name	Category	Page
559	60-559	26 x 2,35	DEFENDER	MTB	21
			DONKEY NEW	CARGO	44
	57-559	26 x 2,25	TRITON	MTB	22
			CHARYBDIS	MTB	21
			CITYHOPPER	CITY TREKKING	36
			SCYLLA	MTB	13
	54-559	26 x 2,10	CHEETAH	MTB	19
			OCELOT	MTB	20
			SCYLLA	MTB	22
	52-559	26 x 2,00	RAPID	MTB	23
			CHARYBDIS	MTB	21
	50-559	26 x 1,90	SAURUS	MTB	22
			ACRIS	MTB	23
			BLADE	MTB	21
			WINNER	MTB	23
			COBRA	CITY TREKKING	42
			FROSTER	ICE SNOW	46
	47-559	26 x 1,75 x 2	SHIELD	CITY TREKKING	40
			SEPIA	CITY TREKKING	41
			WALRUS	CITY TREKKING	42
FLASH			CITY TREKKING	37-38	
40-559	26 x 1,50	SHIELD	CITY TREKKING	40	
		SYRINX	CITY TREKKING	41	
		FLASH	CITY TREKKING	37-38	
540	37-540	24 x 1 3/8	HOOK	CITY TREKKING	39
507	54-507	24 x 2,10	CHEETAH	MTB	19
			OCELOT	MTB	20
	50-507	24 x 1,90	DART	MTB	22
			WINNER	MTB	23
			SCYLLA	MTB	22
			FLASH	CITY TREKKING	37-38
	47-507	24 x 1,75 x 2	RAPID	MTB	23
			SHIELD	CITY TREKKING	40
			WALRUS	CITY TREKKING	42
			FROSTER JP	ICE SNOW	46

Nominal Diameter (mm)	ETRTO	Alternative size	Pattern Name	Category	Page
406	60-406	20 x 2,35	DONKEY NEW	CARGO	44
			ZIRRA F	BMX	24
	57-406	20 x 2,25	ZIRRA R	BMX	24
			CHEETAH	MTB	19
	54-406	20 x 2,10	OCELOT	MTB	20
			NITRO	BMX	24
	52-406	20 x 2,00	WINNER	MTB	23
			SCYLLA	MTB	22
	50-406	20 x 1,90	RAPID	MTB	23
			SHIELD	CITY TREKKING	40
47-406	20 x 1,75 x 2	WALRUS	CITY TREKKING	42	
		FLASH	CITY TREKKING	37-38	
		COBRA	CITY TREKKING	42	
		40-406	20 x 1,50	WINNER	MTB
355	47-355	18 x 1,75 x 2	WALRUS	CITY TREKKING	42
305	54-305	16 x 2,10	CHEETAH	MTB	19
			OCELOT	MTB	20
	47-305	16 x 1,75 x 2	X-CALIBER	MTB	23
WINNER			MTB	23	
254	47-254	14 x 1,75 x 2	WALRUS	CITY TREKKING	42
			WINNER	MTB	23
203	47-203	12 1/2 x 1,75 x 2 1/4	X-CALIBER	MTB	23
			WALRUS	CITY TREKKING	42
152	47-152	10 x 1,75 x 2	RAPID	MTB	23
			WALRUS	CITY TREKKING	42

TYRES

rubena-tyres.com

fo



PACKAGING OF FOLDING TYRES



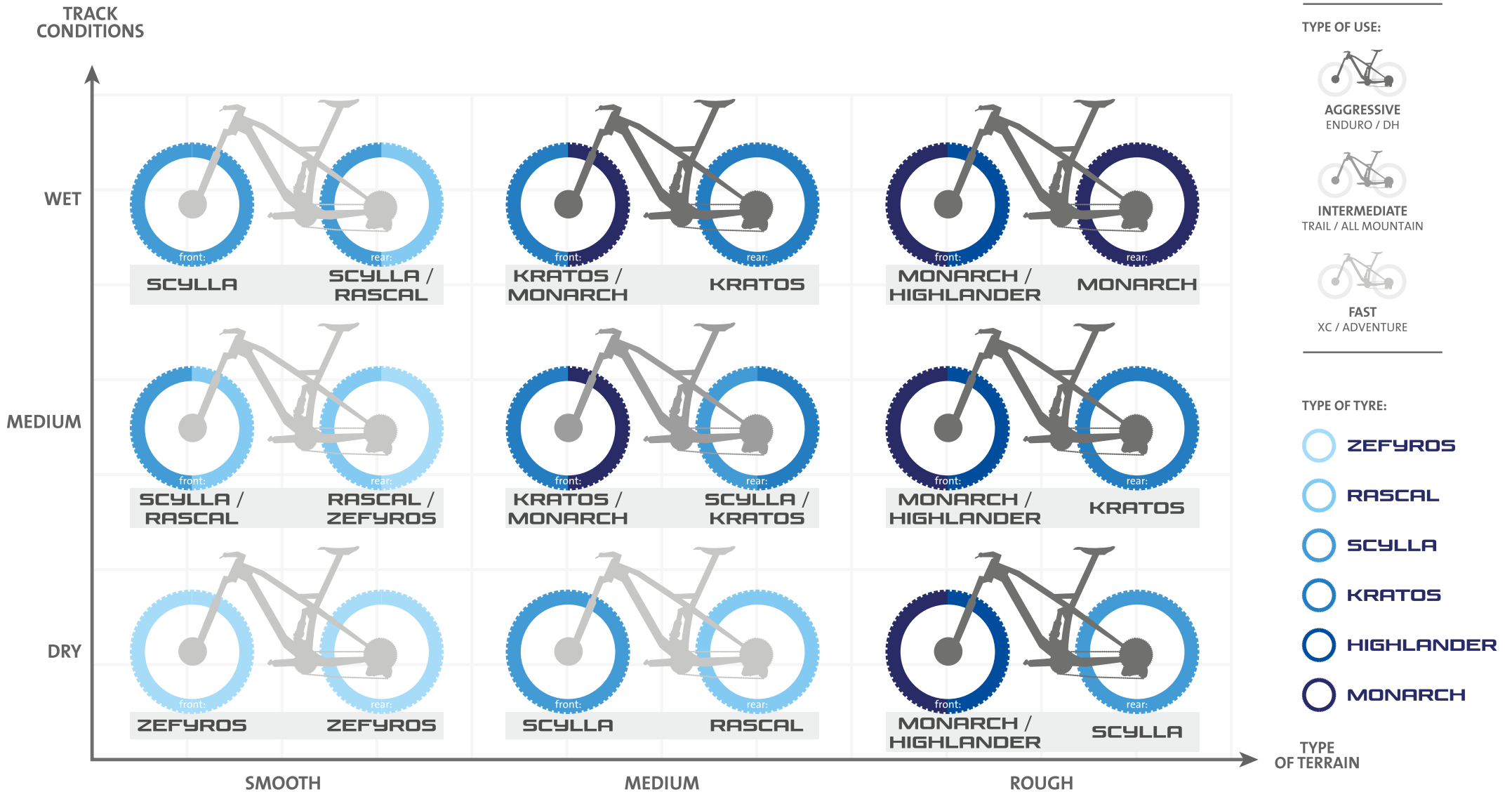
PACKAGING



MTB



MTB – RANGE CONCEPT



OVERVIEW



FAST



ZEFYROS



RASCAL



INTERMEDIATE



SCYLLA



HYPERION



RACE HERO

Textra reinforcement
sidewall & bead area.

Usage:
XC, XCM, Trail

AGGRESSIVE



KRATOS



MONARCH



HIGHLANDER



TRAIL ACE

Textra reinforcement
Bead-to-Bead, sidewall wings.

Usage:
Enduro, Hard Trail

rubena-tyres.com

MTB





Filip Adel, Superior Team
Photo: Miloš Lubas



ZEFYROS RACING

FAST XC



eBike
ready

TUBELESS
READY

Advanced design for even better handling and faster riding in easy rigid terrain. Higher side-knobs bring more traction and confidence in corners thus making the tyre more versatile without losing anything from its original merits.

Tyre name	Performance level	ETRTO	Alternative size	Construction	Colour Thread/Sidewall	Inflating (kPa)	Load (kg)	Weight (g)	Rubena code	
MTB – RACING										
ZEFYROS	Racing	57-622	29 x 2,25	Race Hero	127 TPI, Textra	Black	380	144	660	5-10952755 R14
ZEFYROS	Racing	57-584	27,5 x 2,25	Race Hero	127 TPI, Textra	Black	380	136	610	5-10952740 R14





RASCAL RACING

FAST XC



eBike
ready

TUBELESS
READY

A new type of low-tread tyre that allows fast riding with minimal rolling resistance. Higher lateral knobs increase cornering grip. This tyre is ideal for those looking for maximum performance and excellent handling on dry terrain.



BLACK

TANWALL

Tyre name	Performance level	ETRTO	Alternative size		Construction	Colour Thread/Sidewall	Inflating (kPa)	Load (kg)	Weight (g)	Rubena code	
MTB – RACING											
RASCAL NEW	Racing	57-622	29 x 2,25	Race Hero	127 TPI, Textra	Black	380	144	680	5-10967440	R25
RASCAL NEW	Racing	57-622	29 x 2,25	Race Hero	127 TPI, Textra	Tanwall	380	144	650	5-10967439	R25

rubena-tyres.com



Rubena
TYRES

MTB
RACING



Filip Adel, Superior Team
Photo: Jan Brychta



SCYLLA RACING

XC ALL-ROUNDER



TUBELESS
READY

SCYLLA is our most versatile tyre for a broad range of MTB ride. The new tread profile is designed to offer advanced XC performance but also more aggressive trail capabilities.

The fast tread pattern in combination with optimal side knobs positioning for plenty of cornering grip makes SCYLLA the best choice for you.



BLACK

TANWALL

Tyre name	Performance level	ETRTO	Alternative size	Construction	Colour Thread/Sidewall	Inflating (kPa)	Load (kg)	Weight (g)	Rubena code	
MTB – RACING										
SCYLLA	Racing	66-622	29 x 2,60	Trail Ace	127 TPI, Textra, Wings	Black	330	136	1160	5-10967396 R22
SCYLLA	Racing	62-622	29 x 2,45	Trail Ace	127 TPI, Textra, Wings	Black	350	140	1080	5-10967397 R22
SCYLLA NEW	Racing	62-622	29 x 2,45	Race Hero	127 TPI, Textra	Tanwall	350	140	780	5-10967437 R22
SCYLLA	Racing	57-622	29 x 2,25	Race Hero	127 TPI, Textra	Black	380	144	680	5-10967359 R22
SCYLLA NEW	Racing	57-622	29 x 2,25	Race Hero	127 TPI, Textra	Tanwall	380	144	660	5-10967436 R22
SCYLLA	Racing	66-584	27,5 x 2,60	Trail Ace	127 TPI, Textra, Wings	Black	330	140	1130	5-10967398 R22
SCYLLA	Racing	62-584	27,5 x 2,45	Trail Ace	127 TPI, Textra, Wings	Black	350	140	1050	5-10967412 R22
SCYLLA	Racing	57-584	27,5 x 2,25	Race Hero	127 TPI, Textra	Black	380	136	620	5-10952738 V96
SCYLLA	Racing	57-559	26 x 2,25	Race Hero	127 TPI, Textra	Black	380	131	550	5-10952363 V96



Filip Adel, Superior Team
Photo: Jan Brychta



KRATOS RACING

INTERMEDIATE TRAIL



eBike
ready

TUBELESS
READY

KRATOS is the right choice for rough and hard terrain. More aggressive profile with excellent traction and better control of the bike. The double compound brings even better grip and superb handling in sharp corners. KRATOS is a combination of traction, all-round stability, effective braking properties and low rolling resistance in its class, making it an ideal choice for trail exploration and rough terrain.

Tyre name	Performance level	ETRTO	Alternative size	Construction	Colour Thread/Sidewall	Inflating (kPa)	Load (kg)	Weight (g)	Rubena code	
MTB – RACING										
KRATOS	Racing	66-622	29 x 2,60	Trail Ace	127 TPI, Textra, Wings	Black	330	136	1390	5-10967277 R10
KRATOS	Racing	62-622	29 x 2,45	Trail Ace	127 TPI, Textra, Wings	Black	350	140	1240	5-10967351 R10
KRATOS	Racing	57-622	29 x 2,25	Race Hero	127 TPI, Textra	Black	380	144	760	5-10952737 V98
KRATOS	Racing	66-584	27,5 x 2,60	Trail Ace	127 TPI, Textra, Wings	Black	330	140	1370	5-10967384 R10
KRATOS	Racing	62-584	27,5 x 2,45	Trail Ace	127 TPI, Textra, Wings	Black	350	144	1210	5-10967344 R10
KRATOS	Racing	57-584	27,5 x 2,25	Race Hero	127 TPI, Textra	Black	380	136	710	5-10952739 V98



MTB
RACING

rubena-tyres.com





Filip Adel, Superfor Team



HYPERION RACING

XC – WET OR SOFT TERRAIN



eBike
ready

TUBELESS
READY

HYPERION is a slightly deeper pattern design for additional grip in wet or soft terrain, extended forward plate for better cornering stability, and three direction grooves on knobs for increased riding confidence on obstacles. All this translates into better performance in muddy conditions.

Tyre name	Performance level	ETRTO	Alternative size		Construction	Colour Thread/Sidewall	Inflating (kPa)	Load (kg)	Weight (g)	Rubena code
MTB – RACING										
HYPERION	Racing	54-622	29 x 2,10	Race Hero	127 TPI, Textra	Black	380	133	650	5-10967261 R13
HYPERION	Racing	54-584	27,5 x 2,10	Race Hero	127 TPI, Textra	Black	380	126	610	5-10967260 R13





Enzo Cavard
Photo: Abellan Julien



HIGHLANDER RACING

AGGRESSIVE ENDURO / GRAVITY



eBike
ready

TUBELESS
READY

This tyre is a perfect match for dry and hard-packed terrains. Optimally designed tread pattern allows not only driving in difficult terrain but also ensures great performance in climbing and downhill sections on both mountain bike and eMTB.

Tyre name	Performance level	ETRTO	Alternative size		Construction	Colour Thread/Sidewall	Inflating (kPa)	Load (kg)	Weight (g)	Rubena code	
MTB – RACING											
HIGHLANDER	Racing	62-622	29 x 2,45	Trail Ace	127 TPI, Textra, Wings	Black	380	144	680	5-10967346	R02
HIGHLANDER	Racing	62-584	27,5 x 2,45	Trail Ace	127 TPI, Textra, Wings	Black	380	144	660	5-10967345	R02



MTB RACING

rubena-tyres.com





Simon Andre
Photo: Rupert Fowler



MONARCH RACING

ENDURO / GRAVITY,
ALL TRACKS CONDITIONS



THE MOST GRAVITY ORIENTED TYRE of Rubena range developed in collaboration with Rubena Enduro athletes. Perfect all-round performance for all tracks and conditions. The advanced intermediate profile is combined with enduro dual compounds and Trail Ace construction. Aggressive shoulder knobs, with optimal spaced tread design provide maximum braking, traction and cornering grip. The ground-contact grooves inspired by our winter tyres provide the best level of grip over any track conditions.

Tyre name	Performance level	ETRTO	Alternative size	Construction	Colour Thread/Sidewall	Inflating (kPa)	Load (kg)	Weight (g)	Rubena code	
MTB – RACING										
MONARCH	Racing	66-622	29 x 2,60	Trail Ace	127 TPI, Textra, Wings	330	136	1395	5-10967393	R24
MONARCH	Racing	62-622	29 x 2,45	Trail Ace	127 TPI, Textra, Wings	350	140	1250	5-10967395	R24
MONARCH	Racing	66-584	27,5 x 2,60	Trail Ace	127 TPI, Textra, Wings	330	140	1380	5-10967394	R24
MONARCH	Racing	62-584	27,5 x 2,45	Trail Ace	127 TPI, Textra, Wings	350	144	1220	5-10967413	R24



ENDURO

- 1 Tall side knobs**
Reinforced on the outside to offer maximum support in corners.
- 2 2-3-2 Progressive center line** to keep directional stability and excellent grip.
- 3 Plenty of clearance** for self cleaning.
- 4 Linear and Perpendicular grooves** to improve grip and progressivity.



MONARCH

rubena-tyres.com



MTB
RACING

Rubena
TYRES



CHEETAH

RUGGED TERRAIN – HARD GROUND

CHEETAH is a favourite choice for those who enjoy riding on rugged terrain with hard ground. Even for gravel or travel adventure, CHEETAH is capable to bring you everywhere with a wide smile.

Tyre name	Performance level	ETRTO	Alternative size	Construction	Colour Thread/Sidewall	Inflating (kPa)	Load (kg)	Weight (g)	Rubena code	
MTB – CLASSIC										
CHEETAH	Classic	60-622	29 x 2,35	Classic, E-Bike Ready	Black	350	140	1110	5-10967373	R15
CHEETAH	Classic	54-622	29 x 2,10	Classic	Black	380	128	1000	5-10952486	R15
CHEETAH	Classic	60-584	27,5 x 2,35	Classic, E-Bike Ready	Black	350	130	1040	5-10967374	R15
CHEETAH	Classic	54-584	27,5 x 2,10	Classic	Black	380	120	940	5-10951744	R15
CHEETAH	Classic	54-559	26 x 2,10	Classic	Black	380	116	900	5-10967375	R15
CHEETAH	Classic	54-507	24 x 2,10	Classic	Black	380	106	820	5-10967376	KIDS R15
CHEETAH	Classic	54-406	20 x 2,10	Classic	Black	380	87	660	5-10967377	KIDS R15
CHEETAH	Classic	54-305	16 x 2,10	Classic	Black	380	68	540	5-10967378	KIDS R15



Petr Leták
Photo: Luis Moreno Blázquez



OCELOT

MEDIUM TERRAIN – HARD GROUND

OCELOT has an intermediate tread pattern and is a popular choice for those who enjoy riding on a medium-hard terrain with hard ground. The tread geometry is designed for good self-cleaning under demanding conditions.

Tyre name	Performance level	ETRTO	Alternative size	Construction	Colour Thread/Sidewall	Inflating (kPa)	Load (kg)	Weight (g)	Rubena code	
MTB – CLASSIC										
OCELOT	Classic	60-622	29 x 2,35	Classic, E-Bike Ready	Black	350	140	1110	5-10967324	V85
OCELOT	Classic	54-622	29 x 2,10	Classic	Black	380	128	1000	5-10952471	V85
OCELOT	Classic	60-584	27,5 x 2,35	Classic, E-Bike Ready	Black	350	130	1040	5-10967323	V85
OCELOT	Classic	54-584	27,5 x 2,10	Classic	Black	380	120	940	5-10951725	V85
OCELOT	Classic	54-559	26 x 2,10	Classic	Black	380	116	900	5-10952468	V85
OCELOT	Classic	54-507	24 x 2,10	Classic	Black	380	106	820	5-10952732	KIDS V85
OCELOT	Classic	54-406	20 x 2,10	Classic	Black	380	87	660	5-10952495	KIDS V85
OCELOT	Classic	54-305	16 x 2,10	Classic	Black	380	68	540	5-10951854	KIDS V85



MTB
CLASSIC



rubena-tyres.com

ON



Richard Gasperotti
Photo: Miloš Štáfek



TOMCAT

CHARYBDIS

DEFENDER

BLADE

Tyre name	Performance level	ETRTO	Alternative size	Construction	Colour Thread/Sidewall	Inflating (kPa)	Load (kg)	Weight (g)	Rubena code	
MTB – CLASSIC										
TOMCAT	Classic	54-622	29 x 2,10	Classic	Black	380	128	1000	5-10952485	R12
TOMCAT	Classic	54-584	27,5 x 2,10	Classic	Black	380	120	940	5-10951743	R12
CHARYBDIS	Classic	57-559	26 x 2,25	Classic	Black	380	125	960	5-10952306	V76
CHARYBDIS	Classic	52-559	26 x 2,00	Classic	Black	420	116	900	5-10952469	V76
DEFENDER	Classic	60-559	26 x 2,35	Classic	Black	350	129	1000	5-10952339	V93
BLADE	Classic	50-559	26 x 1,90	Classic	Black	450	126	740	5-10951173	V83



Photo: Luigi Sestili



Tyre name	Performance level	ETRTO	Alternative size	Construction	Colour Thread/Sidewall	Inflating (kPa)	Load (kg)	Weight (g)	Rubena code		
MTB – CLASSIC											
DART	Classic	50-507	24 x 1,90	Classic	Black	450	85	680	5-10952712	KIDS	V67
SAURUS	Classic	50-559	26 x 1,90	Classic	Black	450	114	770	5-10951266		V61
TRITON	Classic	57-559	26 x 2,25	Classic	Black	380	125	980	5-10952316		R08
SCYLLA	Classic	54-559	26 x 2,10	Classic	Black	380	116	900	5-10952271		V75
SCYLLA	Classic	50-507	24 x 1,90	Classic	Black	450	104	790	5-10967238	KIDS	V75
SCYLLA	Classic	50-507	24 x 1,90	Classic	Black / white stripes	450	104	840	5-10952412	KIDS	V75
SCYLLA	Classic	50-406	20 x 1,90	Classic	Black	450	85	660	5-10952420	KIDS	V75
SCYLLA	Classic	50-406	20 x 1,90	Classic	Black / white stripes	450	85	620	5-10952413	KIDS	V75



MTB CLASSIC



rubena-tyres.com





Photo: Miloš Štáfek



ACRIS

WINNER

RAPID

X-CALIBER

Tyre name	Performance level	ETRTO	Alternative size	Construction	Colour Thread/Sidewall	Inflating (kPa)	Load (kg)	Weight (g)	Rubena code	
MTB – CLASSIC										
ACRIS	Classic	50-559	26 x 1,90	Classic	Black	450	114	760	5-10951278	V60
WINNER	Classic	50-559	26 x 1,90	Classic	Black	280	86	750	5-10951154	V45
WINNER	Classic	50-507	24 x 1,90	Classic	Black	320	85	710	5-10952713	KIDS V45
WINNER	Classic	50-406	20 x 1,90	Classic	Black	320	70	570	5-10952711	KIDS V45
WINNER	Classic	47-355	18 x 1,75 x 2	Classic	Black	320	57	520	5-10951843	KIDS V45
WINNER	Classic	47-305	16 x 1,75 x 2	Classic	Black	320	50	470	5-10951852	KIDS V45
WINNER	Classic	47-254	14 x 1,75 x 2	Classic	Black	450	52	350	5-10951770	KIDS V45
RAPID	Classic	52-559	26 x 2,00	Classic	Black	420	116	800	5-10952707	V36
RAPID	Classic	47-507	24 x 1,75 x 2	Classic	Black	450	95	690	5-10952085	KIDS V36
RAPID	Classic	47-406	20 x 1,75 x 2	Classic	Black	450	78	590	5-10952716	KIDS V36
RAPID	Classic	47-203	12 1/2 x 1,75 x 2 1/4	Classic	Black	250	30	360	5-10967340	KIDS V36
X-CALIBER	Classic	47-305	16 x 1,75 x 2	Classic	Black	450	67	450	5-10951837	KIDS V92



ZIRRA F



ZIRRA R



NITRO

BMX

Tyre name	Performance level	ETRTO	Alternative size	Construction	Colour Thread/Sidewall	Inflating (kPa)	Load (kg)	Weight (g)	Rubena code		
BMX											
ZIRRA F	Classic	57-406	20 x 2,25	Classic	Black	380	97	720	5-10967348	KIDS	V94
ZIRRA R	Classic	54-406	20 x 2,10	Classic	Black	380	87	700	5-10967349	KIDS	V88
NITRO	Classic	52-406	20 x 2,00	Classic	Black	420	96	660	5-10952305	KIDS	V89



MTB
CLASSIC/BMX

rubena-tyres.com





ROAD & GRAVEL





Petr Leták
Photo: Libor Vočádlo



ARROW RACING

RACING PRO



ARROW is a road tyre with TEXTRA technology, a high-density fabric that reinforces tyre carcass. Excellent suppleness combined with low weight helps to increase durability and puncture resistance. The ARROW weighs only 250g and uses the excellent Matrix Road Race rubber, a special compound with activated silica. It is designed for competition use with high level performance in all conditions, including wet and low temperatures.

Tyre name	Performance level	ETRTO	Alternative size	Construction	Colour Thread/Sidewall	Inflating (kPa)	Load (kg)	Weight (g)	Rubena code	
ROAD – Racing & Classic										
ARROW	Racing	28-622	700 x 28C	Racing Pro	127 TPI, Textra	700	78	290	5-10967297	R16
ARROW	Classic	28-622	700 x 28C	Classic		700	78	450	5-10967381	R16
ARROW	Racing	25-622	700 x 25C	Racing Pro	127 TPI, Textra	800	75	250	5-10967295	R16
ARROW	Classic	25-622	700 x 25C	Classic		800	75	430	5-10967382	R16



Petr Leták
Photo: Libor Vočádló



SYRINX RACING

RACING PRO



SYRINX road tyre is made of a very dense and extremely stiff rubberized fabric placed around the tyre bead. Its excellent elasticity at almost negligible weight increases durability of the tyre against puncture and abrasion. Made of Matrix Road Race it is designed for sporting use in all-round conditions. Its stable properties also allow the blend to excel for training in low-temperature conditions.

Tyre name	Performance level	ETRTO	Alternative size	Construction	Colour Thread/Sidewall	Inflating (kPa)	Load (kg)	Weight (g)	Rubena code	
ROAD – Racing & Classic										
SYRINX	Racing	25-622	700 x 25C	Racing Pro	127 TPI, Textra	Black	800	75	240	5-10950461
SYRINX	Classic	25-622	700 x 25C	Classic		Black	800	71	430	5-10950453
SYRINX	Racing	23-622	700 x 23C	Racing Pro	127 TPI, Textra	Black	800	66	230	5-10950231
SYRINX	Classic	23-622	700 x 23C	Classic		Black	800	63	430	5-10950211



Rubena
TYRES

ROAD

rubena-tyres.com





X-ROAD RACING

EASY-HARD PACKED TERRAIN/ROADS



eBike
ready

TUBELESS
READY

Tread pattern suitable both for riding in easy, hardpacked terrain and on the roads. Finer and smaller tread figures, especially in the central part of the tyre, ensure low rolling resistance bring joy from fast and comfortable riding.



BLACK

TANWALL

Tyre name	Performance level	ETRTO	Alternative size		Construction	Colour Thread/Sidewall	Inflating (kPa)	Load (kg)	Weight (g)	Rubena code	
GRAVEL – RACING											
X-ROAD	Racing	42-622	700 x 40C	Race Hero	127 TPI, Textra	Black	500	122	470	5-10967390	R17
X-ROAD	Racing	42-622	700 x 40C	Race Hero	127 TPI, Textra	Tanwall	500	122	470	5-10967438	R17
X-ROAD	Racing	40-622	700 x 38C	Race Hero	127 TPI, Textra	Black	550	118	455	5-10967325	R17
X-ROAD	Racing	33-622	700 x 33C	Race Hero	127 TPI, Textra	Black	600	100	330	5-10952860	R17



X-FIELD RACING

MODERATE - RATHER SOLID TERRAIN



eBike
ready

TUBELESS
READY

The most versatile tread pattern designed for moderate and rather solid terrain. Tread figures with optimal height and allocation provide low rolling resistance, speed, traction and effective braking. X-FIELD is the right choice for most CX tracks.

Tyre name	Performance level	ETRTO	Alternative size	Construction	Colour Thread/Sidewall	Inflating (kPa)	Load (kg)	Weight (g)	Rubena code
GRAVEL – RACING									
X-FIELD	Racing	33-622	700 x 33C	Race Hero	127 TPI, Textra	600	100	350	5-10952861 R18



GRAVEL





X-SWAMP RACING

WET – MUDDY – SOFT TERRAIN



eBike
ready

TUBELESS
READY

The roughest pattern designed for wet, muddy or soft terrain. The layout and knobs size provide perfect traction, solid bike handling and tread self-cleaning function.

Tyre name	Performance level	ETRTO	Alternative size	Construction	Colour Thread/Sidewall	Inflating (kPa)	Load (kg)	Weight (g)	Rubena code
GRAVEL – RACING									
X-SWAMP	Racing	33-622	700 x 33C	Race Hero	127 TPI, Textra	600	100	360	5-10952862 R19



Photo: Giulia Blasi



CHEETAH



OCELOT



GRIPPER

Tyre name	Performance level	ETRTO	Alternative size	Construction	Colour Thread/Sidewall	Inflating (kPa)	Load (kg)	Weight (g)	Rubena code	
GRAVEL – CLASSIC										
CHEETAH	Classic	40-622	700 x 38C	Classic	Black	550	113	730	5-10967386	R15
OCELOT	Classic	40-622	700 x 38C	Classic	Black	550	113	700	5-10967387	V85
GRIPPER	Classic	35-622		Classic	Black	600	98	610	5-10951222	V84



Rubena
TYRES

GRAVEL



rubena-tyres.com

NUW



CITY & TREKKING



ELECTRON

CITY E-BIKES

eBike ready STOP THORN SMART

Tyre pattern specifically designed for city e-bikes providing increased traction on sides of the tread that brings better grip in curves.
All tyres with Stop Thorn system are E-BIKE ready.

Tyre name	Performance level	ETRTO	Alternative size	Construction	Colour Thread/Sidewall	Inflating (kPa)	Load (kg)	Weight (g)	Rubena code
CITY & TREKKING									
ELECTRON	Classic Plus	47-622	28 x 1,75; 700 x 45C	STOP THORN SMART 1 mm protection, REFLEX (RS)	Black	450	135	910	5-10967379 R21
ELECTRON	Classic Plus	37-622	700 x 35C	STOP THORN SMART 1 mm protection, REFLEX (RS)	Black	600	113	660	5-10967380 R21



Photo: Giulia Blasi



CITYHOPPER

CITY E-BIKES



As the name CITYHOPPER suggests, it is the right choice for high-quality surfaces in urban areas. The casing profile provides a comfortable ride and dampens road surface bumps. Some versions of the casing offer additional protection and safety features.

All tyres with Stop Thorn system are E-BIKE ready.



BLACK

BROWN

CREAM

Tyre name	Performance level	ETRTO	Alternative size	Construction	Colour Thread/Sidewall	Inflating (kPa)	Load (kg)	Weight (g)	Rubena code
CITY & TREKKING									
CITYHOPPER	Classic Plus	52-622	28 x 2,00	STOP THORN SMART 29TPI, 1 mm protection, REFLEX (RS)	Black	420	141	860	5-10952440 V99
CITYHOPPER	Classic Plus	52-622	28 x 2,00	STOP THORN SMART 29TPI, 1 mm protection, REFLEX (RS)	Cream	420	141	890	5-10952446 V99
CITYHOPPER	Classic Plus	52-622	28 x 2,00	STOP THORN SMART 29TPI, 1 mm protection, REFLEX (RS)	Brown	420	141	880	5-10952442 V99
CITYHOPPER	Classic	52-622	28 x 2,00	Classic	Black	420	141	910	5-10952441 V99
CITYHOPPER	Classic	52-622	28 x 2,00	Classic	Cream	420	141	810	5-10952447 V99
CITYHOPPER	Classic	52-622	28 x 2,00	Classic	Brown	420	141	810	5-10952443 V99
CITYHOPPER	Classic Plus	57-559	26 x 2,25	STOP THORN SMART 29TPI, 1 mm protection, REFLEX (RS)	Black	382	133	870	5-10967409 V99
CITYHOPPER	Classic Plus	57-559	26 x 2,25	STOP THORN SMART 29TPI, 1 mm protection, REFLEX (RS)	Brown	382	133	870	5-10967410 V99
CITYHOPPER	Classic	57-559	26 x 2,25	Classic	Black	380	133	910	5-10951856 V99
CITYHOPPER	Classic	57-559	26 x 2,25	Classic	Cream	382	133	880	5-10967407 V99
CITYHOPPER	Classic	57-559	26 x 2,25	Classic	Brown	382	133	880	5-10967408 V99





FLASH

BEAT CITY TRAFFIC

⚡ eBike ready
STOP THORN SMART
STOP THORN ADVANCED
STOP THORN ULTIMATE

Do you want to get through the city traffic in a flash? FLASH is ideal choice to beat city traffic. The tread structure provides low rolling resistance and good adhesion on both dry and wet surfaces. FLASH is available in many sizes and 2 colour combinations. All tyres with Stop Thorn system are E-BIKE ready.

Tyre name	Performance level	ETRTO	Alternative size	Construction	Colour Thread/Sidewall	Inflating (kPa)	Load (kg)	Weight (g)	Rubena code	
CITY & TREKKING										
FLASH NEW	Classic Plus	47-622	28 x 1,75; 700 x 45C	STOP THORN ULTIMATE	29TPI, 5 mm protection, REFLEX (RS)	Black	450	135	1120	5-10967446
FLASH	Classic Plus	47-622	28 x 1,75; 700 x 45C	STOP THORN ADVANCED	29TPI, 3 mm protection, REFLEX (RS)	Black	450	135	1000	5-10952228
FLASH	Classic Plus	47-622	28 x 1,75; 700 x 45C	STOP THORN SMART	29TPI, 1 mm protection, REFLEX (RS)	Black	450	127	880	5-10952229
FLASH	Classic	47-622	28 x 1,75; 700 x 45C	Classic	REFLEX (RS)	Black	450	127	820	5-10952224
FLASH	Classic	47-622	28 x 1,75; 700 x 45C	Classic	REFLEX (RS)	Brown	450	127	780	5-10952150
FLASH	Classic	47-622	28 x 1,75; 700 x 45C	Classic	REFLEX (RS)	Black	450	127	820	5-10952225
FLASH	Classic Plus	42-622	700 x 40C	STOP THORN ADVANCED	29TPI, 3 mm protection, REFLEX (RS)	Black	500	122	970	5-10952205
FLASH	Classic Plus	42-622	700 x 40C	STOP THORN SMART	29TPI, 1 mm protection, REFLEX (RS)	Black	500	115	790	5-10952202



Photo: Giulia Blasi



BLACK

BROWN



Rubena
TYRES

**CITY
& TREKKING**

Tyre name	Performance level	ETRTO	Alternative size	Construction		Colour Thread/Sidewall	Inflating (kPa)	Load (kg)	Weight (g)	Rubena code	
FLASH	Classic	42-622	700 x 40C	Classic	REFLEX (RS)	Black	500	115	740	5-10952717	V66
FLASH	Classic	42-622	700 x 40C	Classic	REFLEX (RS)	Brown	500	115	740	5-10967298	V66
FLASH	Classic	42-622	700 x 40C	Classic		Black	500	115	740	5-10952213	V66
FLASH	Classic Plus	37-622	700 x 35C	STOP THORN ADVANCED	29TPI, 3 mm protection, REFLEX (RS)	Black	600	113	770	5-10951316	V66
FLASH	Classic Plus	37-622	700 x 35C	STOP THORN SMART	29TPI, 1 mm protection, REFLEX (RS)	Black	600	106	670	5-10951319	V66
FLASH	Classic	37-622	700 x 35C	Classic		Black	600	106	610	5-10951306	V66
FLASH	Classic	32-622	700 x 32C	Classic		Black	650	90	550	5-10950805	V66
FLASH	Classic Plus	28-622	700 x 28C	STOP THORN SMART	29TPI, 1 mm protection, REFLEX (RS)	Black	700	78	450	5-10950489	V66
FLASH	Classic	28-622	700 x 28C	Classic		Black	700	78	430	5-10950476	V66
FLASH	Classic	37-590	26 x 1 3/8	Classic		Black	600	101	620	5-10951196	V66
FLASH NEW	Classic Plus	47-559	26 x 1,75 x 2	STOP THORN ULTIMATE	29TPI, 5 mm protection, REFLEX (RS)	Black	450	135	1030	5-10952170	V66
FLASH	Classic Plus	47-559	26 x 1,75 x 2	STOP THORN ADVANCED	29TPI, 3 mm protection, REFLEX (RS)	Black	450	122	900	5-10952168	V66
FLASH	Classic Plus	47-559	26 x 1,75 x 2	STOP THORN SMART	29TPI, 1 mm protection, REFLEX (RS)	Black	450	115	740	5-10952157	V66
FLASH	Classic	47-559	26 x 1,75 x 2	Classic	REFLEX (RS)	Black	450	115	750	5-10952166	V66
FLASH	Classic	47-559	26 x 1,75 x 2	Classic		Black	450	115	750	5-10952175	V66
FLASH	Classic	47-559	26 x 1,75 x 2	Classic		Brown	450	115	700	5-10952139	V66
FLASH	Classic	40-559	26 x 1,50	Classic		Black	550	102	640	5-10951412	V66
FLASH	Classic Plus	50-507	24 x 1,90	STOP THORN ADVANCED	29TPI, 3 mm protection, REFLEX (RS)	Black	450	107	880	5-10967268	KIDS V66
FLASH	Classic	50-507	24 x 1,90	Classic		Black	450	107	680	5-10967267	KIDS V66
FLASH	Classic Plus	47-406	20 x 1,75 x 2	STOP THORN ADVANCED	29TPI, 3 mm protection, REFLEX (RS)	Black	450	80	700	5-10967265	KIDS V66
FLASH	Classic	47-406	20 x 1,75 x 2	Classic		Black	450	80	560	5-10967264	KIDS V66

rubena-tyres.com





Photo: Giulia Blasi

M

HOOK

CITY TREK



eBike ready STOP THORN SMART STOP THORN ADVANCED

The universal tread pattern of the HOOK tyre is designed for riding on poor and unpaved surfaces. The almost smooth central part of the tread ensures less rolling resistance when riding on the road. Some tyres are also manufactured with other protective and safety features. All tyres with Stop Thorn system are E-BIKE ready.

Tyre name	Performance level	ETRTO	Alternative size	Construction	Colour Thread/Sidewall	Inflating (kPa)	Load (kg)	Weight (g)	Rubena code	
CITY & TREKKING										
HOOK	Classic	32-630	27 x 1 ¼	Classic		650	91	550	5-10950936	V69
HOOK	Classic Plus	42-622	700 x 40C	STOP THORN SMART	29TPI, 1 mm protection, REFLEX (RS)	500	115	790	5-10952187	V69
HOOK	Classic	42-622	700 x 40C	Classic		500	115	740	5-10952718	V69
HOOK	Classic Plus	37-622	700 x 35C	STOP THORN ADVANCED	29TPI, 3 mm protection, REFLEX (RS)	600	113	770	5-10951334	V69
HOOK	Classic Plus	37-622	700 x 35C	STOP THORN SMART	29TPI, 1 mm protection, REFLEX (RS)	600	106	570	5-10951323	V69
HOOK	Classic	37-622	700 x 35C	Classic		600	106	610	5-10951344	V69
HOOK	Classic	32-622	700 x 32C	Classic		650	90	550	5-10950800	V69
HOOK	Classic	37-590	26 x 1 ¾	Classic		600	101	620	5-10951202	V69
HOOK	Classic	40-584	26 x 1 ½	Classic		550	106	670	5-10951509	V69
HOOK	Classic	37-540	24 x 1 ¾	Classic		600	93	530	5-10951124	V69



Photo: Giulia Blasí



SHIELD

CITY TREK

eBike ready STOP THORN SMART

The SHIELD casing is designed for poorer quality and unpaved surfaces, but the smooth centreline of the tread provides lower rolling resistance even when riding on the road. The tread is fitted with an integrated (Clever Face) wear identifier that alerts the cyclist to the degree of tread wear with a smiley-shaped mouth. Some tyres are manufactured with additional protection and safety features. All tyres with Stop Thorn system are E-BIKE ready.

Tyre name	Performance level	ETRTO	Alternative size	Construction	Colour Thread/Sidewall	Inflating (kPa)	Load (kg)	Weight (g)	Rubena code			
CITY & TREKKING												
SHIELD	Classic	40-622	700 x 38C	Classic	😊	Black	550	113	700	5-10951574	V81	
SHIELD	Classic	47-559	26 x 1,75 x 2	Classic	😊	Black	450	115	750	5-10952164	V81	
SHIELD	Classic	40-559	26 x 1,50	Classic	😊	Black	550	102	650	5-10951408	V81	
SHIELD	Classic	47-507	24 x 1,75 x 2	Classic	😊	Black	350	91	730	5-10967247	KIDS V81	
SHIELD	Classic Plus	47-406	20 x 1,75 x 2	STOP THORN SMART	😊	29TPI, 1 mm protection, REFLEX (RS)	Black	320	70	630	5-10951957	KIDS V81
SHIELD	Classic	47-406	20 x 1,75 x 2	Classic	😊	Black	320	70	600	5-10952277	KIDS V81	

😊 CLEVER FACE – Integrovaný identifikátor opotrebení pláště.



CITY & TREKKING

rubena-tyres.com

of



Photo: Giulia Blasi



GRIPPER



LANDMARK



SYRINX



SEPIA

Tyre name	Performance level	ETRTO	Alternative size	Construction	Colour Thread/Sidewall	Inflating (kPa)	Load (kg)	Weight (g)	Rubena code		
CITY & TREKKING											
GRIPPER	Classic	42-622	700 x 40C	Classic	Black	500	115	710	5-10952192	V84	
LANDMARK	Classic	40-622	700 x 38C	Classic	Black	550	113	730	5-10951580	V86	
SYRINX	Classic	40-559	26 x 1,50	Classic	Black	550	102	560	5-10951406	V80	
SEPIA	Classic	42-622	700 x 40C	STOP THORN SMART	29TPI, 1 mm protection, REFLEX (RS)	Black	500	115	760	5-10952197	V71
SEPIA	Classic	42-622	700 x 40C	Classic		Black	500	115	750	5-10952719	V71
SEPIA	Classic	47-559	26 x 1,75 x 2	Classic		Black	450	115	750	5-10952141	V71



Photo: Giulia Blasi



WALRUS

COBRA

MISTRAL

FLIPPER

Tyre name	Performance level	ETRTO	Alternative size	Construction	Colour Thread/Sidewall	Inflating (kPa)	Load (kg)	Weight (g)	Rubena code	
CITY & TREKKING										
WALRUS	Classic	47-622	28 x 1,75; 700 x 45C	Classic	Black	280	96	820	5-10952704	V41
WALRUS	Classic	47-559	26 x 1,75 x 2	Classic	Black	450	115	730	5-10952701	V41
WALRUS	Classic	47-507	24 x 1,75 x 2	Classic	Black	280	80	680	5-10952709	KIDS V41
WALRUS	Classic	47-406	20 x 1,75 x 2	Classic	Black	450	86	560	5-10952714	KIDS V41
WALRUS	Classic	47-355	18 x 1,75 x 2	Classic	Black	320	62	550	5-10951841	KIDS V41
WALRUS	Classic	47-305	16 x 1,75 x 2	Classic	Black	280	51	460	5-10951851	KIDS V41
WALRUS	Classic	47-203	12 1/2 x 1,75 x 2 1/4	Classic	Black	250	34	320	5-10967339	KIDS V41
WALRUS	Classic	47-152	10 x 1,75 x 2	Classic	Black	380	34	280	5-10950104	KIDS V41
COBRA	Classic	50-559	26 x 1,90	Classic	Black	450	126	760	5-10951279	V58
COBRA	Classic	40-406	20 x 1,50	Classic	Black	450	76	460	5-10951880	KIDS V58
MISTRAL	Classic	40-635	28 x 1 1/2	Classic	Black	280	77	830	5-12950408	V19
FLIPPER	Classic	37-622	700 x 35C	Classic	Black	600	106	580	5-10951349	V70

CARGO



TYRE FEATURES:

- > tyre load capacity from 130 - 170 kg
- > reflective stripe for increased safety
- > Improved tyre protection 4Armour
- > Green Endurance MAX Compound
- > Certified up to 50 km/h

4 ARMOUR 4 layer carcass



DONKEY

CARGO

eBike
ready

This DONKEY has been developed particularly for the needs of the cargo sector, where high demands on load capacity and durability are crucial. Thanks to the double protection of the bicycle tyre and the special Green Endurance MAX compound, speed and durability are guaranteed even under heavy loads. Tested for driving up to 50 km/h.

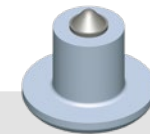
CARGO

Tyre name	Performance level	ETRTO	Alternative size	Construction	Colour Thread/Sidewall	Inflating (kPa)	Load (kg)	Weight (g)	Rubena code	
CARGO										
DONKEY NEW	Classic Plus	60-559	26 x 2,35	Cargo	2x29 TPI, 4 layer carcass, REFLEX (RS)	Black	450	170	1330	5-10967434 R28
DONKEY NEW	Classic Plus	60-406	20 x 2,35	Cargo	2x29 TPI, 4 layer carcass, REFLEX (RS)	Black	450	130	970	5-10967433 R28

ICE & SNOW



Rubena Winter tyres offer the highest quality of studs. The carbide tips in an aluminum body ensure the lowest possible weight and the highest wear resistance. The studs can last several thousands of kilometers. The tips get gently abraded and slightly pushed into the tread knobs while riding but this has no impact neither on the riding comfort or the stud performance. It is recommended that new tyres are allowed a 40 – 50 km “bedding in” period in order to allow the studs to settle in their housings. No heavy braking or aggressive riding should be performed during this first period.



The carbide tips in an aluminum body

The effectiveness of studs depends on their total number and allocation in the tread pattern. Generally, the best performance can be achieved on packed snow and frozen tarmac. On the contrary, in deep snow or on cobblestones the effect is minimal. The performance of studded tyres is significantly affected by the inflation pressure. Higher pressure reduces the noise when riding on hard surfaces whilst lower pressures increase the effectiveness of the studs. Performance and adhesion limits of winter tyres should be approached with caution. No recommendations nor descriptions can advise on these boundaries. The use of studded bicycle tyres is not limited by legislation.



GRIPPER ICE RACING

STOP THORN
SMART

SILICA
WINTER
COMPOUND



FROSTER RACING

STOP THORN
SMART

SILICA
WINTER
COMPOUND

ICE & SNOW

Tyre name	Performance level	ETRTO	Alternative size	Construction	Colour Thread/Sidewall	Inflating (kPa)	Load (kg)	Weight (g)	Rubena code	
ICE & SNOW										
GRIPPER ICE (272 studs)	Racing	42-622	700 x 40C	STOP THORN SMART	29 TPI, 1 mm protection, REFLEX (RS)	Black	500	115	890	5-10952723
GRIPPER ICE (136 studs)	Racing	42-622	700 x 40C	STOP THORN SMART	29 TPI, 1 mm protection, REFLEX (RS)	Black	500	115	850	5-10952722
FROSTER (240 studs)	Racing	47-559	26 x 1,75 x 2	STOP THORN SMART	29 TPI, 1 mm protection, REFLEX (RS)	Black	450	115	860	5-10952133
FROSTER (120 studs)	Racing	47-559	26 x 1,75 x 2	STOP THORN SMART	29 TPI, 1 mm protection, REFLEX (RS)	Black	450	115	830	5-10952132
FROSTER JP (100 studs)	Racing	47-507	24 x 1,75 x 2	STOP THORN SMART	29 TPI, 1 mm protection, REFLEX (RS)	Black	450	105	770	5-10967307

R06
R06
R07
R07
R20

CONSTRUCTION

TEXTRA



Extremely durable rubberized fabric with high-density polymer threads to protect the tyre on sidewalls or from bead to bead.



TUBELESS
READY



TRAIL ACE

For more demanding conditions –
enduro and trails.

Textra fabric protects the entire carcass from bead to bead. Sidewall reinforcement is provided by extra wings. Such a tyre protection brings optimized grip, and stable riding in difficult terrain even at lower pressure.

- 1 Matrix DH Dual**
Highly grippy combination of two compounds, low rebound ultra soft on surface with great adhesion. Supported with harder and stronger compound underneath for extra resilience.
- 2 TEXTRA reinforcement layer**
Rubberized high-density fabric from bead to bead, increases resistance against cuts and abrasion.
- 3 127 TPI Casing**
Carcass.
- 4 Rubena “wings”**
Sidewall Reinforcement.
- 5 Aramid Beads**
Reinforced.



Designed for all XC riders.

RACE HERO


Textra fabric protects the entire sidewall and bead area and dramatically increases resistance against sidewall cuts and abrasions. Tyres with this type of protection are primarily intended for riding and racing over rough terrain where they provide both superior reliability and ultra-high performance.



Designed for road cycling.

RACING PRO

Textra technology provides bead to bead protection. Excellent flexibility combined with low weight helps increase durability and puncture resistance, which riders will appreciate especially at longer distances and higher speeds.

- 1 **TEXTRA reinforcement layer**
Rubberized high-density fabric.
-  **TUBELESS READY**

- 2 **127 TPI Casing**
Carcass.

- 3 **Aramid Beads**
Reinforced.



- 1 **TEXTRA reinforcement layer**
Rubberized high-density fabric from bead to bead, increases resistance against cuts and abrasion.

- 2 **127 TPI Casing**
Carcass.

- 3 **Aramid Beads**
Reinforced.



CONSTRUCTION

STOP THORN ADVANCED THREE - LEVEL TYRE PROTECTION

STOP THORN SMART

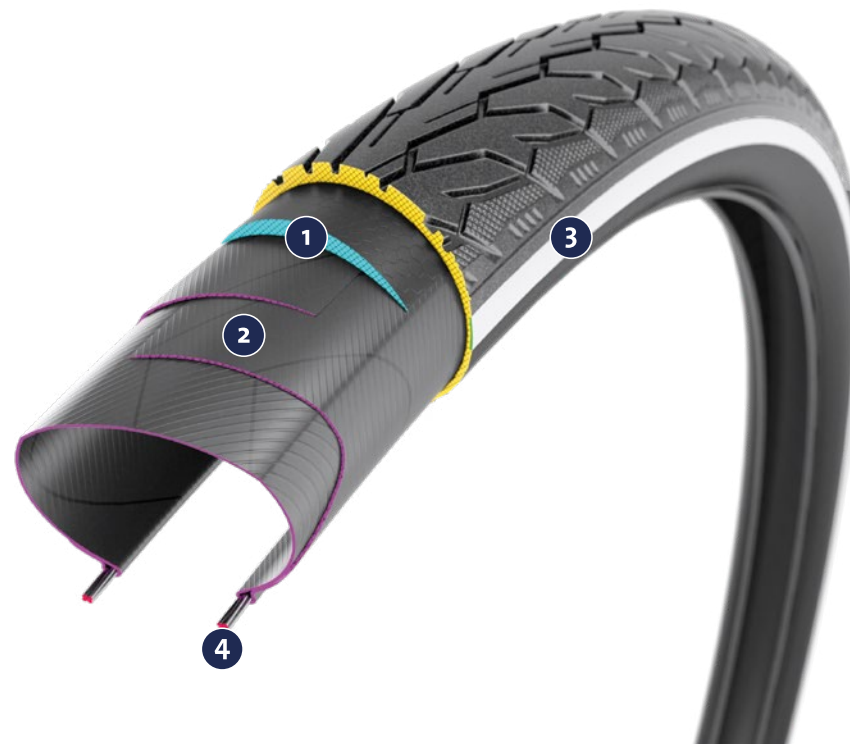
A band of 1 mm thick special rubber placed between the tread and the carcass decreases the possibility of having a puncture (high structural strength and hardness). It increases the rigidity and strength of the tyre crown and decreases the tyre drag while maintaining.

STOP THORN ADVANCED

Approx. 3 mm thick rubber buffer produced from a special compound placed between tread and carcass. Its properties prevent from having puncture or cut off and such eliminates the risk of tyre defects while common use. It increases stiffness and strength in the crown area and eliminates drag while keeping adhesion.

STOP THORN ULTIMATE

Approx. 5 mm rubber bumper made of natural rubber. The ultimate protection of the casing against the penetration of a foreign body through its crown.



eBike
ready

- 1 Puncture protection rubber belt
- 2 Carcass
- 3 Reflex Stripe
- 4 Twisted Steel Wire (2x2)

COMPOUNDS



TYRE / COMPOUND	GREEN ENDURANCE	SWC	MATRIX ROAD RACE	MATRIX XC RACE	MATRIX DH DUAL
COMPOUNDS					
MONARCH					○
HIGHLANDER					○
KRATOS				○	○
SCYLLA				○	○
HYPERION				○	
RASCAL				○	
ZEFYROS				○	
X-ROAD				○	
X-SWAMP				○	
X-FIELD				○	
ARROW			○		
SYRINX			○		
GRIPPER ICE		○			
FROSTER		○			
DONKEY	MAX				
ELECTRON	○				
FLASH	○				
HOOK	○				
CITYHOPPER	○				
SHIELD	○				
GRIPPER	○				
LANDMARK	○				
SEPIA	○				
WALRUS	○				
COBRA	○				
MISTRAL	○				
FLIPPER	○				
OCELOT	○				
CHEETAH	○				
TOMCAT	○				



GREEN ENDURANCE

Compound specially developed for both recreational driving in nature and in cities, where the emphasis is on long service life and tyre resistance with minimal rolling resistance.

GREEN ENDURANCE MAX

Special type of moped compound designed for tyres with a higher demand for load and long life.



SILICA WINTER COMPOUND

This compound contains silica with excellent properties for riding at low temperatures, snow, and ice. Developed especially for cold winter conditions.

MATRIX ROAD RACE

Compound with a high silica content, for the minimum tyre rolling resistance. Designed for maximum speed and performance.

MATRIX XC RACE

Compound for driving in unpaved XC terrain. Designed for both dry and wet conditions. Ideal for advanced riders. The silica content gives the tyre the highest performance.

MATRIX DH DUAL

Highly grippy combination of two compounds with extreme resistance and cushioning in the most demanding terrains, in any weather. Designed specifically for enduro and downhill.

CONSTRUCTION
COMPOUNDS

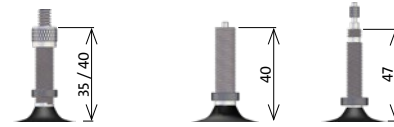


TUBES



Nominal Diameter (mm)	Short Dimension	ETRTO	Alternative Size	Weight [g]	AV35	AV40	AV48	DV35	DV40	DV48	FV47	FV60	FV80	SV22
					CLASSIC BSC 0,9 mm									
622 / 635	28 / 29"	62/75 - 622	"PLUS" size 29 x 2.45 - 3.00	264		5-10300040					5-10300047			
622 / 635	28 / 29"	47/62-622/635	28 / 29 x 1.75 - 2.45	196		5-10340180	5-10340182		5-10340183	5-10340186	5-10340184			
622 / 635	28"	28/47-622/635	28 x 1.10 - 1.75	136		5-10340060	5-10340061		5-10340062	5-10340064	5-10340063	5-10340067		
622 / 635	700	23/28-622/635	700 x 23C / 28C	97							5-10340010	5-10340011	5-10340012	
584	27.5"	62/75 - 584	"PLUS" size 27,5 x 2.45 - 3.00	249		5-10301340					5-10301343			
584	27.5"	47/62-584	27.5 x 1.75 - 2.45	185		5-10340170	5-10340176		5-10340172		5-10340173			
584 / 597	26 / 27.5"	28/47-584/597	26 / 27.5 x 1.10 - 1.75	128		5-10340050			5-10340051		5-10340052			
559	26"	47/62-559	26 x 1.75 - 2.45	178		5-10340160	5-10340162		5-10340163		5-10340164			
559	26"	28/47-559	26 x 1.10 - 1.75	123		5-10340040	5-10340044		5-10340041		5-10340042			
540	24"	25/37-540	24 x 1 x 1 1/2	106		5-10302433			5-10302439					
507	24"	47/62-507	24 x 1.75 - 2.45	163		5-10340150	5-10340151		5-10340152		5-10340153			
507	24"	28/47-507	24 x 1.10 - 1.75	112		5-10340030	5-10340031		5-10340032					
406	20"	47/62-406	20 x 1.75 - 2.45	133		5-10340140	5-10340144		5-10340141					
406	20"	28/47-406	20 x 1.10 - 1.75	92		5-10340020	5-10340023		5-10340021					
355	18"	32/47-355	18 x 1.25 - 1.75	82	5-10340100		5-10340102	5-10340101						
305	16"	47/62-305	16 x 1.75 - 2.45	104	5-10340130		5-10340133	5-10340131						
305	16"	32/47-305	16 x 1.25 - 1.75	72	5-10340090			5-10340091						
254 / 288	14"	32/47-254/288	14 x 1.25 - 1.75	65	5-10340080									
203	12.5"	47/62-203	12 1/2 x 1.75 - 2.45	74	5-10340120			5-10340121						
203	12.5"	32/47-203	12 1/2 x 1.25 - 1.75	52	5-10340070			5-10340071						
152	10"	47 - 152	10 x 1.75 x 2	58	5-10302611			5-10302741						
e-scooter	8"		8 x 11/2 x 2	55										5-10340195
					LIGHT LHC 0,6 mm									
622	28 / 29"	47/57-622	29 x 1.75 - 2.30	126							5-10340110			
622	700	23/28-622	700 x 23C	75							5-10340001	5-10340002	5-10340003	
					EXTREME SBC 1,2 mm									
622	28 / 29"	54/75 - 622	29 x 2.10 - 3.00	364							5-10303020			
584	27.5"	54/75 - 584	27.5 x 2.10 - 3.00	343							5-10303018			
559	26"	54/75 - 559	26 x 2.10 - 3.00	330							5-10303017			
					SLUG – SELF SEALANT BSC 0,9 mm									
622	28 / 29"	47/62 - 622/635	28 / 29 x 1.75 – 2.45	306		5-10340181					5-10340185			
584	27.5"	47/62 - 584/597	27.5 x 1.75 – 2.45	295		5-10340171					5-10340174			
559	26"	47/62 - 559	26 x 1.75 – 2.45	288		5-10340161					5-10340165			

GAADI TUBES



Nominal Diameter (mm)	ETRTO	Alternative Marking	Weight (average)	DV35	DV40	SV40	FV47	VERSION	
								AFM	OEM
GAADI TUBES									
622 635	50 / 54 - 622	28 / 29 x 1,90 - 2,10	214	x	5-10317022	5-10317023	5-10317021	111	150
	40 / 47 - 622 / 635	700 x 38 / 45C	209	x	5-10317019	5-10317020	5-10317018	111	150
	32 / 37 - 622 / 635	700 x 32 / 35C	165	x	5-10317016	5-10317017	5-10317015	111	150
584 597	50 / 54 - 584 / 597	27,5 x 1,90 - 2,10	205	x	5-10317031	5-10317032	5-10317033	111	150
	40 / 47 - 584 / 597	27,5 x 1,60 - 1,75	201	x	5-10317028	5-10317029	5-10317030	111	150
	32 / 37 - 584 / 597	x	157	x	5-10317025	5-10317026	5-10317027	111	150
559	50 / 54 - 559	26 x 1,90 - 2,10	195	x	5-10317013	5-10317014	5-10317012	111	150
	40 / 47 - 559	26 x 1,60 - 1,75	191	x	5-10317010	5-10317011	5-10317009	111	150
507	50 / 54 - 507	24 x 1,90 - 2,10	180	5-10317007	x	5-10317008	5-10317006	111	150
	40 / 47 - 507	24 x 1,60 - 1,75	176	5-10317004	x	5-10317005	5-10317003	111	150
406	50 / 54 - 406	20 x 1,90 - 2,10	152	5-10317001	x	5-10317002	5-10317000	111	150

GAADI® is a linear bicycle tube made of high-quality compound and having two ends. Available for all wheel sizes from 20 to 28 inches, it can be delivered with a Dunlop valve (DV), Sclaverand / French (FV), Italian valve (IV) or with a Schrader valve (SV).

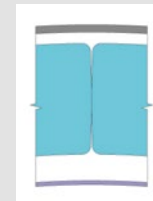
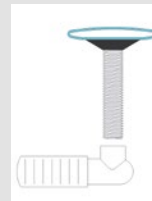
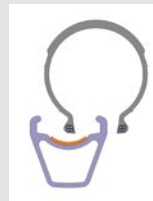
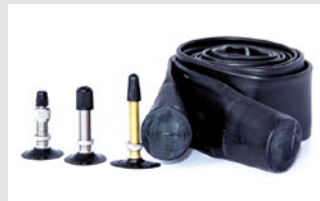




Photo: Giulia Blasi

W.M.

SAFETY & INFLATING



RS – REFLEX STRIPE

Excellent properties of reflective stripe provide a high light reflection during dusk and dawn, night, fog, rain and low light conditions for the whole tyre life.

The reflective stripe on the sidewall is a distinctive safety esthetic element increasing the utility and value of the product.



CLEVER FACE

Tyre Abrasion Integrated Identifier



1. STAGE

100 %
OF THE PATTERN LEFT

new



2. STAGE

60 %
OF THE PATTERN LEFT

recommended
re-assembly from the
rear to the front wheel



3. STAGE

10 %
OF THE PATTERN LEFT

new tyre required

Inflating – conversion table

CONVERSION kPa to psi, bar, atm, Torr																		
kPa	160	190	200	250	280	320	350	380	400	450	500	550	560	600	630	650	700	800
psi	23.2	27.6	29.0	36.3	40.6	46.4	50.8	55.1	58.0	65.3	72.5	79.8	81.2	87.0	91.4	94.3	101.5	116.0
bar	1.6	1.9	2.0	2.5	2.8	3.2	3.5	3.8	4.0	4.5	5.0	5.5	5.6	6.0	6.3	6.5	7.0	8.0
atm	1.6	1.9	2.0	2.5	2.8	3.2	3.5	3.8	3.9	4.4	4.9	5.4	5.5	5.9	6.2	6.4	6.9	7.9
Torr	1200	1425	1500	1875	2100	2400	2625	2850	3000	3375	3750	4125	4200	4500	4725	4875	5250	6000



TSS – TUBELESS SEALANT

Special liquid sealant latex-based is intended mainly for tyres of TUBELESS SUPRA construction in order to create tubeless system.



ACCESSORIES

Product Name	Specifications	Rubena code
TUBELESS SEALANT 150 ml		7-001632
TUBELESS SEALANT 1000 ml		5-12265111-000
TUBELESS SEALANT 5000 ml		5-12265112-000
TUBELESS SUPRA KIT 26"	set for one bike	5-10320000-000
TUBELESS SUPRA KIT 27,5"	set for one bike	5-10332000-000
TUBELESS SUPRA KIT 29"	set for one bike	5-10331000-000
TUBELESS SUPRA VALVES	set for one bike	5-10327000-000



rubena-tyres.com

Rubena
TYRES

Milan Myšík – Enduro rider
Photo: Boris Beyer

Rubena Tyres
Rubena, s.r.o.
Českých bratří 338
547 01 Náchod, Czech Republic

Your Distributor/Dealer:

Rubena
TYRES

RIDING WITHOUT LIMITS

For more information about
Rubena Tyres & Tubes visit:

[RUBENA-TYRES.COM](https://www.rubena-tyres.com)



@RIDERUBENA

#RIDERUBENA
#RIDINGWITHOUTLIMITS